

Introducing the : MHM POWERBALE 50XL Semi-Automatic Horizontal Baler



www.mhmukld.com

General Description:

The MHM 50XL Semi-Automatic Horizontal is a mid-range baler with market leading bale weights and an attractive price compared to competitors on the marketplace. The MHM Powerbale 50XL Semi-Automatic is a heavy-duty machine with a simple operator friendly design, it produces bales up to 600kg – depending on the waste stream and the method of loading. 1250mm x 1100mm x 1100mm (L x W x H) and dependent on feed it produces bales up to 2.4 tonne per hour. The MHM Powerbale 50XL Semi-Automatic Horizontal Baler makes light work of baling large volumes of a variety of waste materials with the minimum amount of effort. Ripping teeth are fitted as standard to our 50XL, 5 Horizontal wire ties with easy wire feed which means no more climbing atop slippery machines to get the wires pulled through. The MHM Powerbale 50XL has a portcullis door with anti-wire snap technology and full bale ejection. Bale chamber wear plates are fitted as standard giving the MHM Powerbale 50XL unrivalled serviceability against its competitors. The controls have multi product selection capabilities for various products ensuring maximum bale weights



Photographs for illustration purposes only

MHM UK LTD
Unit C, Royalty Lane, Swineshead, Boston, Lincolnshire, PE20 3PJ
Tel : +44 (0)1205 821522
Email: sales@mhmukld.com





Options available:

- Custom Hopper Designs
- Conveyor Feed
- Bin Lift
- Bale Eject Beacon
- Retention Claws
- Power Pack Cover
- Hydraulic Clamp on Front Do
- Dual Product Switch
- Personal Safety Bar/Contact



Pictured Above:
Heavy duty serrated cutting knife makes light work of cutting and baling with the minimum amount of effort.

Technical Specification:

Bale Size Nominal: 1250mmx1100 x 1100mm (L x W X H)
 Bale Weight: Up to 600kg (Dependent on waste stream)
 Compaction Force: 50 Tonnes
 Cylinder Bore: 180mm
 Motor Power: 11kW
 Power Supply Rating: 32 Amp 3P + N + E, D type breaker

Bale Discharge: Full Eject
 Bale Chamber End Door: Hydraulic Portcullis
 Wire/Tape Tying: 5 Horizontal Wire Ties
 Bin Tipper Range: 240-1100 ltr (optional)
 Bale Made Light: Standard
 Baling Wire or Tape Holders: Standard
 Automatic & Manual Cycle Operation: Standard
 Bale Chamber Wear Plates: Standard
 Shear Blades: Standard
 Dolav Bin Tipper: Optional

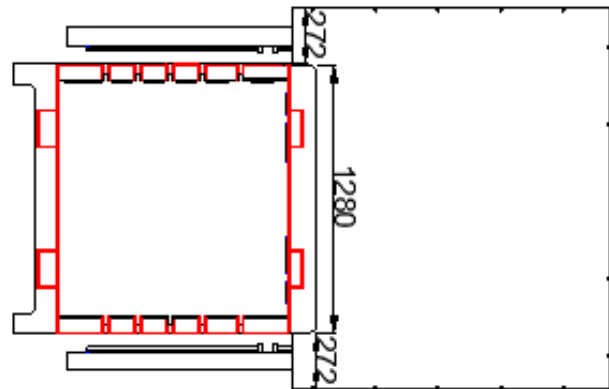
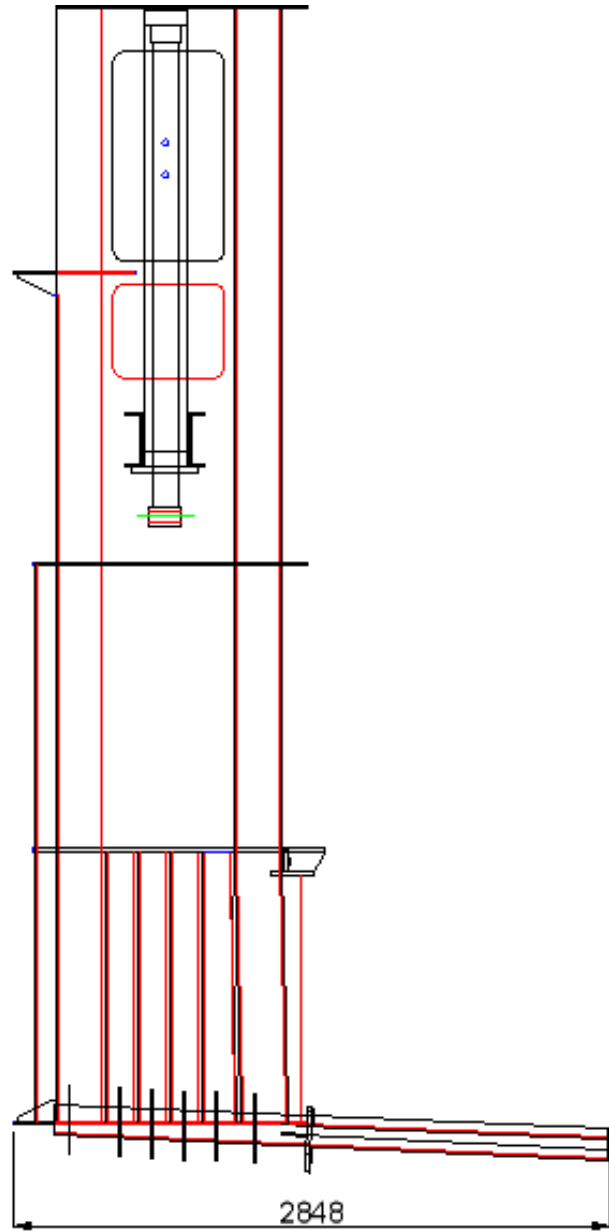
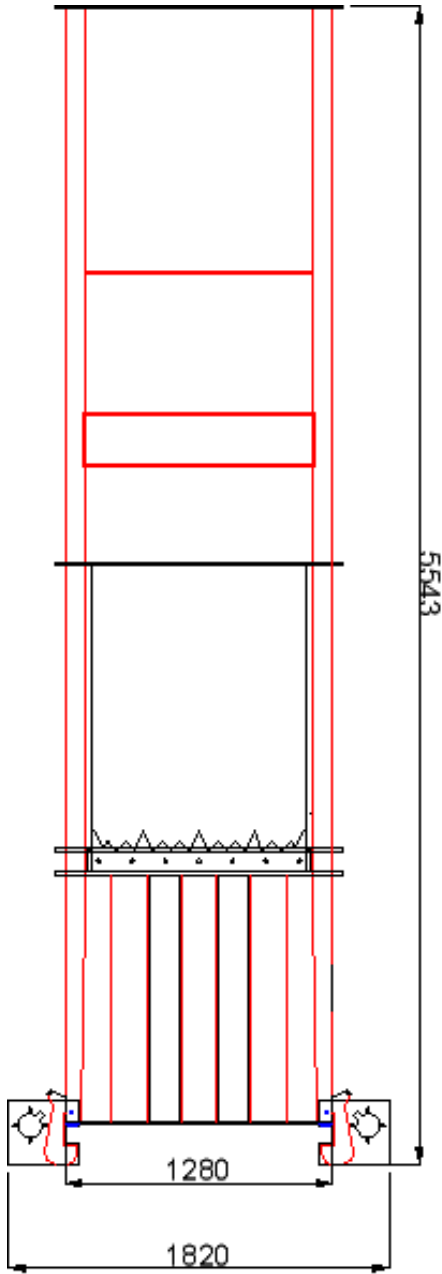
Dimensions:
 Loading Aperture Nominal: 1350 x 1100
 Loading Height: 1650mm
 Overall Baler Length: 5500mm
 Overall Baler Width: 1660 (without Bin Lift)
 Overall Height: 2570mm



Photographs for illustration purposes only

MHM UK LTD
 Unit C, Royalty Lane, Swineshead, Boston, Lincolnshire, PE20 3PJ
 Tel : +44 (0)1205 821522
 Email: sales@mhmukltd.com





Photographs for illustration purposes only

MHM UK LTD
 Unit C, Royalty Lane, Swineshead, Boston, Lincolnshire, PE20 3PJ
 Tel : +44 (0)1205 821522
 Email: sales@mhmukltd.com

