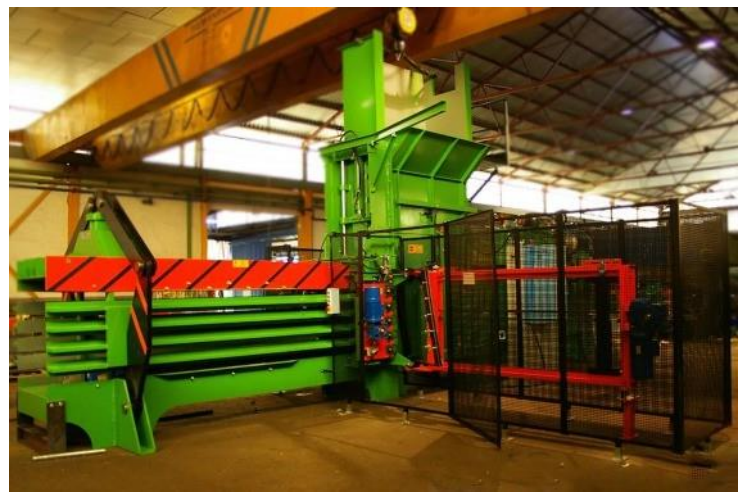




www.mhmukltd.com

Introducing the:
MHM - JOVISA JS1800
 Fully Automatic Horizontal Baler

The JS-1800 fully automatic horizontal baler is the first in the open channel range to offer 5 wire tying making up for the greater pressure the bales are made with. This JS-1800 fully automatic horizontal baler can be supplied with cord baling system in addition to the standard steel wiring system. Production rates of this fully automatic horizontal baler are greatly increased making this baler great for larger operations, with bale weights upwards of 500kg and ram pressure at 85 tonnes.



Description	Units	JS-1800/90	JS-1800V/90
Force of pressing	Tn	85	85
Force of pressing	kW	2x 29.4	2x 29.4
No Hydraulic pumps/type	- - - - -	2/Variable Flow	2/Variable flow
Section of bale	mm	1100x900	800x1100
Section of hopper	mm	1800x900	1800x1100
Volume of theoretical baling	m3/h	305	343
Theoretical Production According Calculations with density 500Kg/m3	Tn/h	15	17
Position of tying device	- - - - -	Lateral	Lateral

Photographs for illustration purposes only



MHM UK LTD
 Unit C Royalty Ln, Swineshead, Boston PE20 3PJ
 Tel : +44 (0)1205 821522 Fax: +44 (0)1205 821554
 Email: sales@mhmukltd.com

MAQUINARIA E HIDRÁULICA
JOVISA, S.L.
 MHM are sole distributors for sales & service for all Jovisa, S.L machines to the whole of the UK & Ireland



Photographs for illustration purposes only

CE Marked

MHM UK LTD
Unit C Royalty Ln, Swineshead, Boston PE20 3PJ
Tel : +44 (0)1205 821522 Fax: +44 (0)1205 821554
Email: sales@mhukltd.com

MHM are sole distributors
for sales & service for all
Jovisa, S.L machines to
the whole of the UK &
Ireland

